

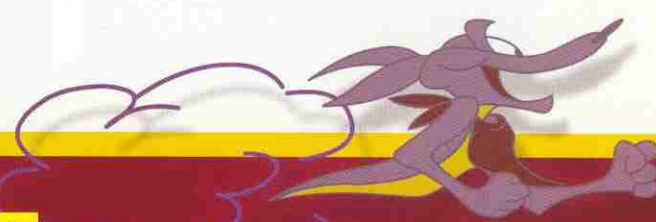


COYOTE

RECREATIONAL VEHICLES DESIGNED FOR REAL PEOPLE



camping on the WILD side



**BUILDING QUALITY AND FUN
FOR OVER 31 YEARS**

*Whether you select
a standard model
or one loaded
with custom options,
Coyote provides
the flexibility you want
at a price that leaves
room for the journey.*



20C

COYOTE STANDARD FEATURES

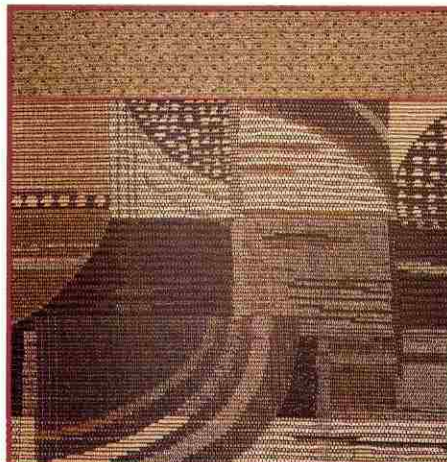
- 2x3 Floor Joist 16 O.C.
- 5/8" Plywood Tongue & Groove Floor
- 2x2 Studs 16" O.C.
- .024 MESA Metal (sidewalls)
- Fiberglass Ext. (front & rear)
- 1-Piece Aluminum Roof with 12 Year Warranty
- Complete R7 Insulation
- Radius Compression Windows
- Oak Framed Cabinet Doors
- Wood Core Cabinet Fronts
- Wood Drawer Sides
- Norcold™ Single Door Refrigerator
- 3 Burner Range
- Power Range Hood w/ Light
- 6 Gallon Water Heater
- Wired for A/C
- Wired for Microwave
- 20 Amp Converter
- 2-20# Gas Bottles
- 2 5/16" Coupler
- Removable Dinette Table (not available on 20C or 22C)
- Mini Blinds
- 16,000 BTU Furnace
- 2 Stabilizer Jacks (rear)

COYOTE AVAILABLE OPTIONS & WEIGHTS

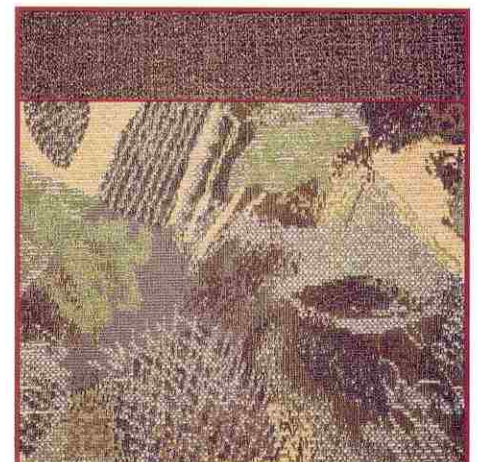
- TV Antenna - 6 lbs.
- Microwave - 36 lbs.
- 13,500 A/C - 105 lbs.
- 7,000 BTU A/C
- AM-FM Stereo - 7 lbs.
- AM-FM / CD - 7 lbs.
- Awning - 60 lbs.
- Monitor Panel
- 2-12v Coil Cord Lights
- Oven - 50 lbs.
- Spare Tire - 40 lbs.
- Spare Tire Carrier
- Spare Tire Cover
- Fiberglass Sidewalls
- Gas Bottle Cover
- Exterior Shower
- Sink Cover (1)
- 2 Stabilizer Jacks (front)
- Outside Cook Center - 24 lbs.
- Norcold™ Refrigerator - 32 lbs. (Double Door Refer available on 21C, 22C, 23BMS, 23CMS & 25CMS)



SWEETBRIAR

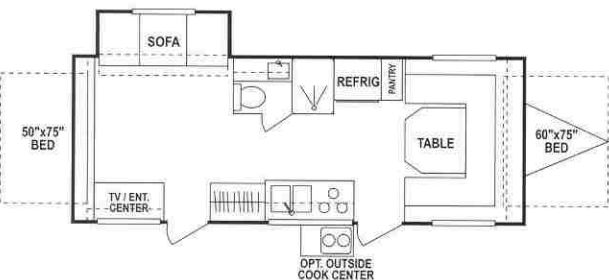
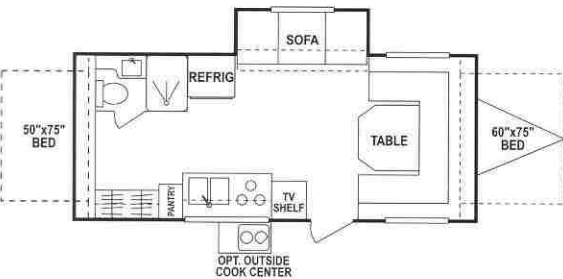
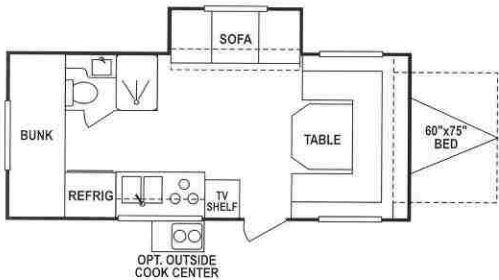
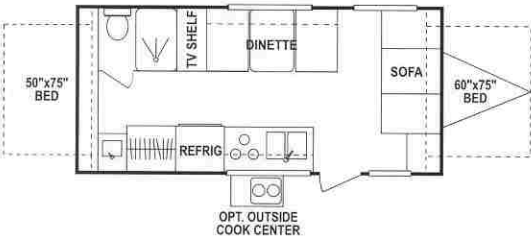
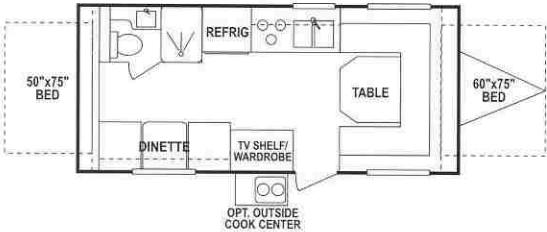
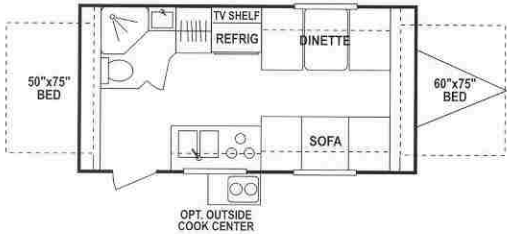
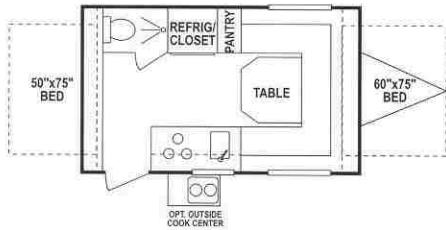


MOCHA



PRISM

COYOTE TRAVEL TRAILERS



16C

UVW (Unloaded Vehicle Wt.)*	2580	Exterior Width	88"	Gray Water Cap. (gal.)	32
Dry Hitch Wt.	180	Exterior Length	17'10"	Tire Size	15"
Dry Axle Wt.	2400	Exterior Height	107"	Electrical Service (amps)	30
NCC (Net Carrier Capacity)	920	Water Cap. (gal.)	30	Sleeping Capacity	6
GVWR	3500	Waste Water Cap. (gal.)	6	Setup Length	217"

20C

UVW (Unloaded Vehicle Wt.)*	3226	Exterior Width	88"	Gray Water Cap. (gal.)	32
Dry Hitch Wt.	460	Exterior Length	20'3"	Tire Size	14"
Dry Axle Wt.	2306	Exterior Height	107"	Electrical Service (amps)	30
NCC (Net Carrier Capacity)	2286	Water Cap. (gal.)	30	Sleeping Capacity	8
GVWR	5512	Waste Water Cap. (gal.)	32	Setup Length	235"

21C

UVW (Unloaded Vehicle Wt.)*	3370	Exterior Width	88"	Gray Water Cap. (gal.)	32
Dry Hitch Wt.	480	Exterior Length	22'5"	Tire Size	14"
Dry Axle Wt.	2890	Exterior Height	107"	Electrical Service (amps)	30
NCC (Net Carrier Capacity)	2142	Water Cap. (gal.)	30	Sleeping Capacity	7
GVWR	5512	Waste Water Cap. (gal.)	32	Setup Length	257"

22C

UVW (Unloaded Vehicle Wt.)*	3338	Exterior Width	88"	Gray Water Cap. (gal.)	32
Dry Hitch Wt.	440	Exterior Length	21'6"	Tire Size	14"
Dry Axle Wt.	2898	Exterior Height	107"	Electrical Service (amps)	30
NCC (Net Carrier Capacity)	2174	Water Cap. (gal.)	30	Sleeping Capacity	8
GVWR	5512	Waste Water Cap. (gal.)	32	Setup Length	248"

23B MS

UVW (Unloaded Vehicle Wt.)*	3394	Exterior Width	88"	Gray Water Cap. (gal.)	32
Dry Hitch Wt.	460	Exterior Length	24'3"	Tire Size	14"
Dry Axle Wt.	2934	Exterior Height	107"	Electrical Service (amps)	30
NCC (Net Carrier Capacity)	2118	Water Cap. (gal.)	30	Sleeping Capacity	8
GVWR	5512	Waste Water Cap. (gal.)	32	Setup Length	275"

23C MS

UVW (Unloaded Vehicle Wt.)*	3394	Exterior Width	88"	Gray Water Cap. (gal.)	32
Dry Hitch Wt.	460	Exterior Length	24'3"	Tire Size	14"
Dry Axle Wt.	2934	Exterior Height	107"	Electrical Service (amps)	30
NCC (Net Carrier Capacity)	2118	Water Cap. (gal.)	30	Sleeping Capacity	8
GVWR	5512	Waste Water Cap. (gal.)	32	Setup Length	275"

25C MS

UVW (Unloaded Vehicle Wt.)*	3666	Exterior Width	88"	Gray Water Cap. (gal.)	32
Dry Hitch Wt.	560	Exterior Length	25'5"	Tire Size	14"
Dry Axle Wt.	3046	Exterior Height	107"	Electrical Service (amps)	30
NCC (Net Carrier Capacity)	1846	Water Cap. (gal.)	30	Sleeping Capacity	8
GVWR	5512	Waste Water Cap. (gal.)	32	Setup Length	287"



2x2 WARRANTY

The K-Z 2x2 Warranty is a manufacturer's warranty. Each K-Z product is warranted to the original purchaser for twenty-four (24) months from the original date of purchase. Coverage includes appliances, components, construction and FULL structure.

Our warranty is also transferable within the first two (2) years for a small processing fee. For a copy of the warranty with full terms and conditions, ask your local K-Z Dealer or visit our web site at <http://www.kz-rv.com>.

VEHICLE LOADING

Every effort has been made to provide the greatest number of options for the recreational owner. Each owner is responsible to select loads allowing the recreational vehicle to remain within the manufacturer's specified chassis weight limits. Do not overload the recreational vehicle.

DRY WEIGHTS

Dry weights are based on standard features only and do not include optional equipment. Carrying capacity is determined by subtracting UVW from GVWR and includes fluids, options and cargo. Liquid capacities and weights are approximations only.

NOTE: *This information is intended as a guide only. Weights of individual vehicles are approximate. Consult your Owner's Manual for complete loading, weighing & towing instructions.*



Dealer:

Plant Location: 1 Mile West of S.R. 5 on U.S. 20